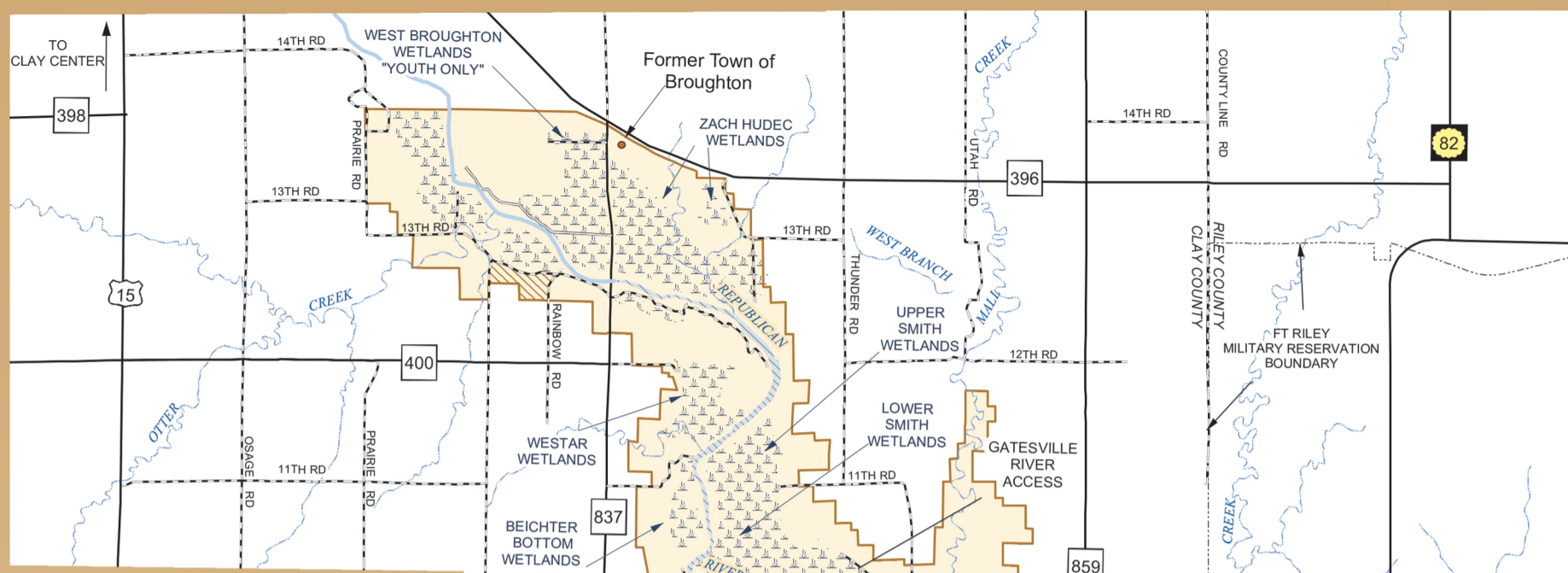




US Army Corps of Engineers
Kansas City District

No Hunting Areas		Public Hunting Areas	
	Corps of Engineers Park		KDWPT Managed
	ORV Area		Corps of Engineers
	State Park		Handicapped Accessible KDWPT Managed
	City Park		Archery Hunting Only
	County Park		Paved Road
	Leased Areas		All-weather Road (gravel)
	Wildlife Refuge		Dirt Road
	Wetlands		Hazardous Boating Area

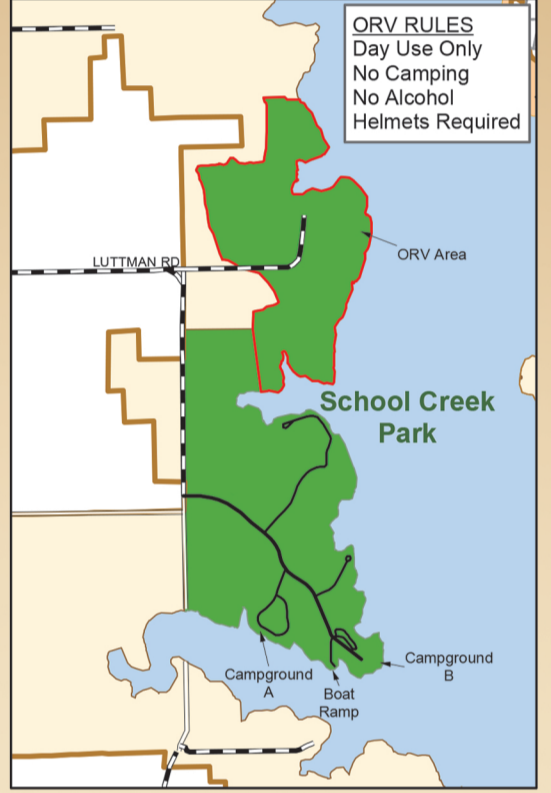
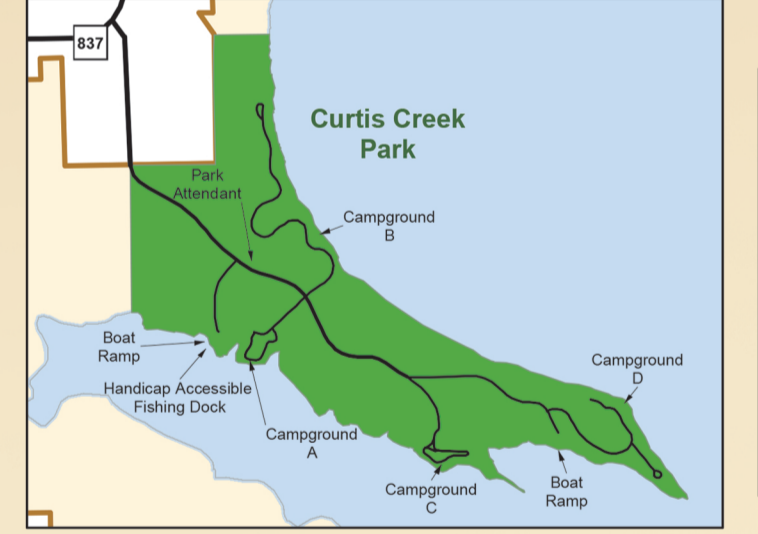
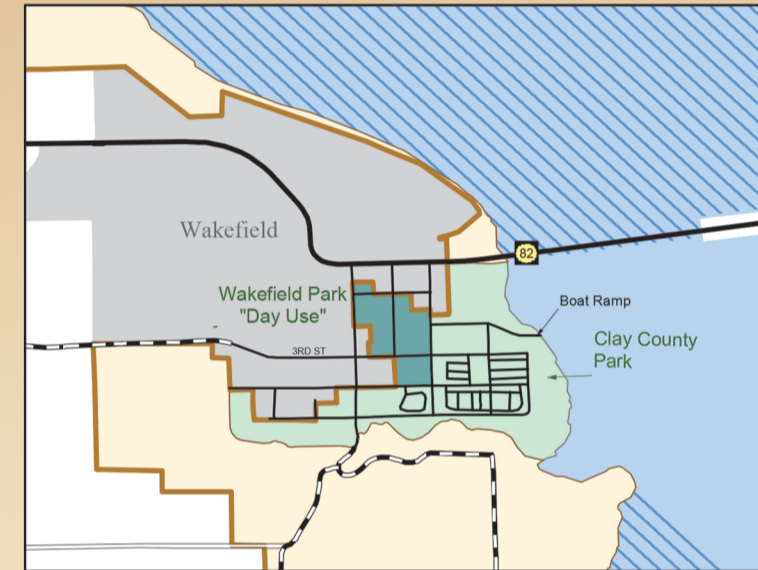


Milford Lake

Kansas

U.S. ARMY CORPS OF ENGINEERS - KANSAS CITY DISTRICT

FACILITIES	PARKS	Acorns Resort	Clay County Park	Curtis Creek	East Rolling Hills	Farnum Creek	Flagstop Resort & RV Park	Milford State Park	North Overlook	Outlet	School Creek	Thunderbird Marina	Timber Creek	West Rolling Hills
Boat Ramp														
Cabins														
Camping														
Camping (Equestrian)														
Group Camp Area														
Group Picnic Shelter														
Hookups - Electric														
Hookups - Sewage														
Hookups - Water														
Sanitary Dump Station														
Showers														
Swimming Beach														



LAKE NAVIGATION AID and MARKER SYSTEM

KNOW AND HEED BOYS AND MARKERS FOR SAFETY
United States Aids to Navigation System (USATONS)

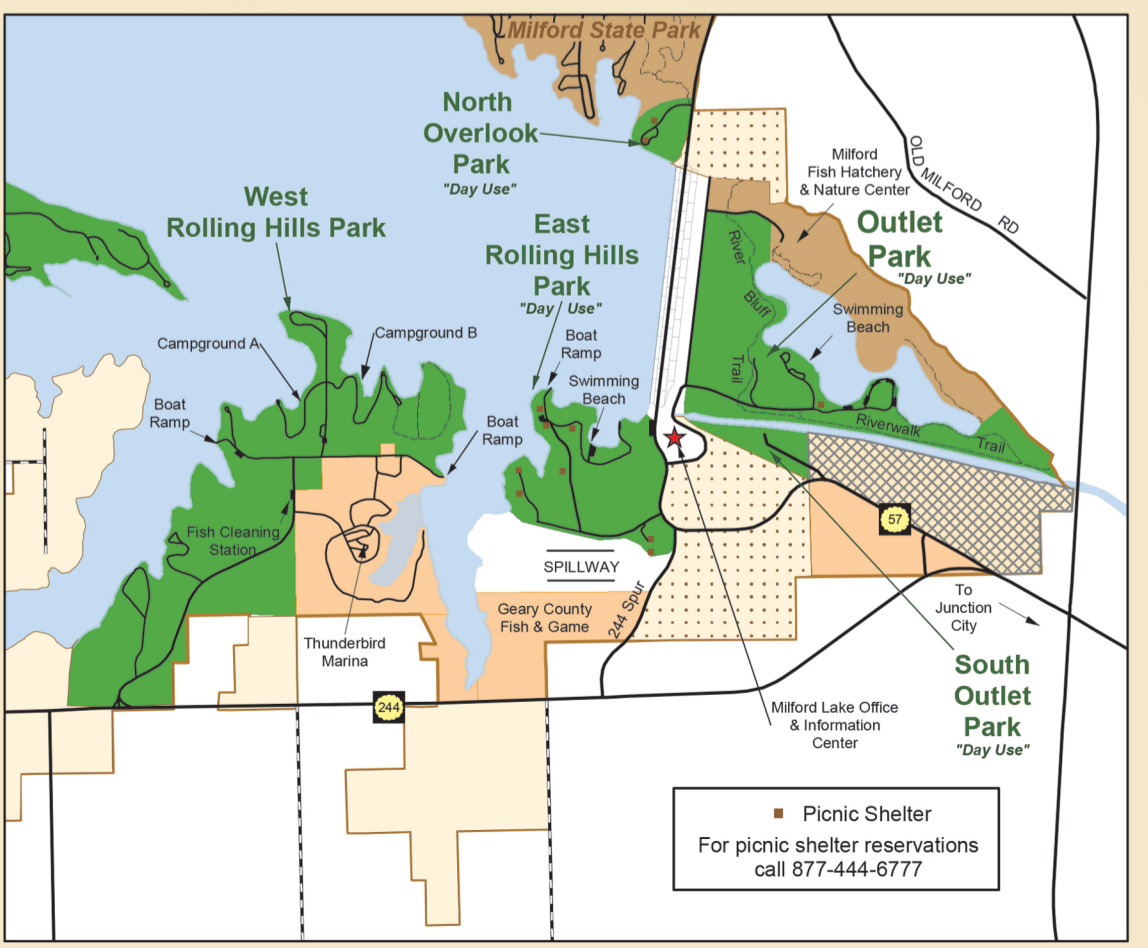
Project Data

Dam
Type Rolled earth fill embankment
Overall Length in feet 15,000,000 cubic yards of fill material
Maximum Height above streambed in feet 6,300
Crown Width in feet 140
Base Width in feet 30
Tower and Outlet Works 40,000 cubic yards of concrete
Spillway Uncontrolled chute
Gates hydraulically-operated

Lake
Elevation, feet above mean sea level:
Multipurpose pool 1,144.4
Flood pool 1,176.2

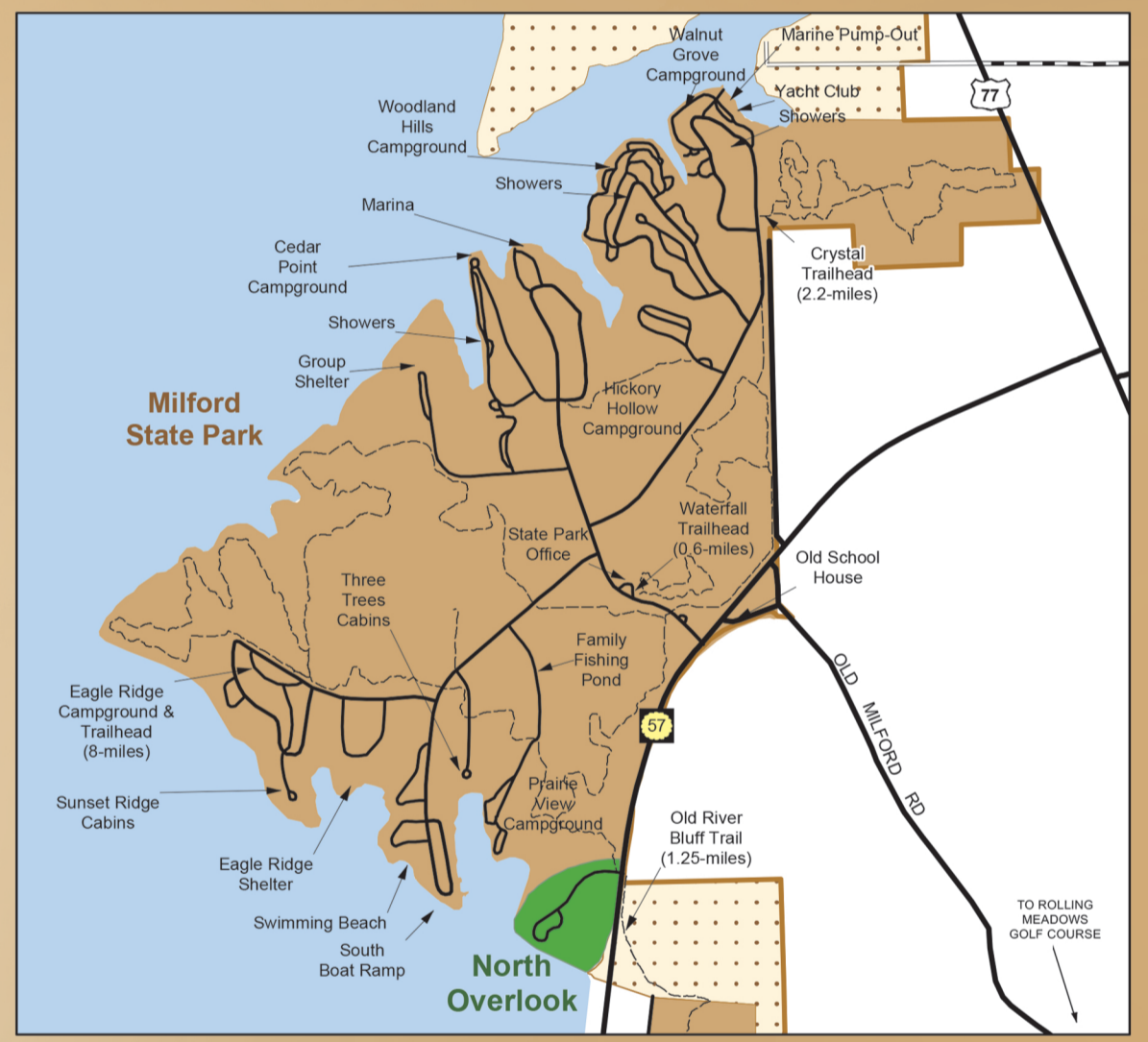
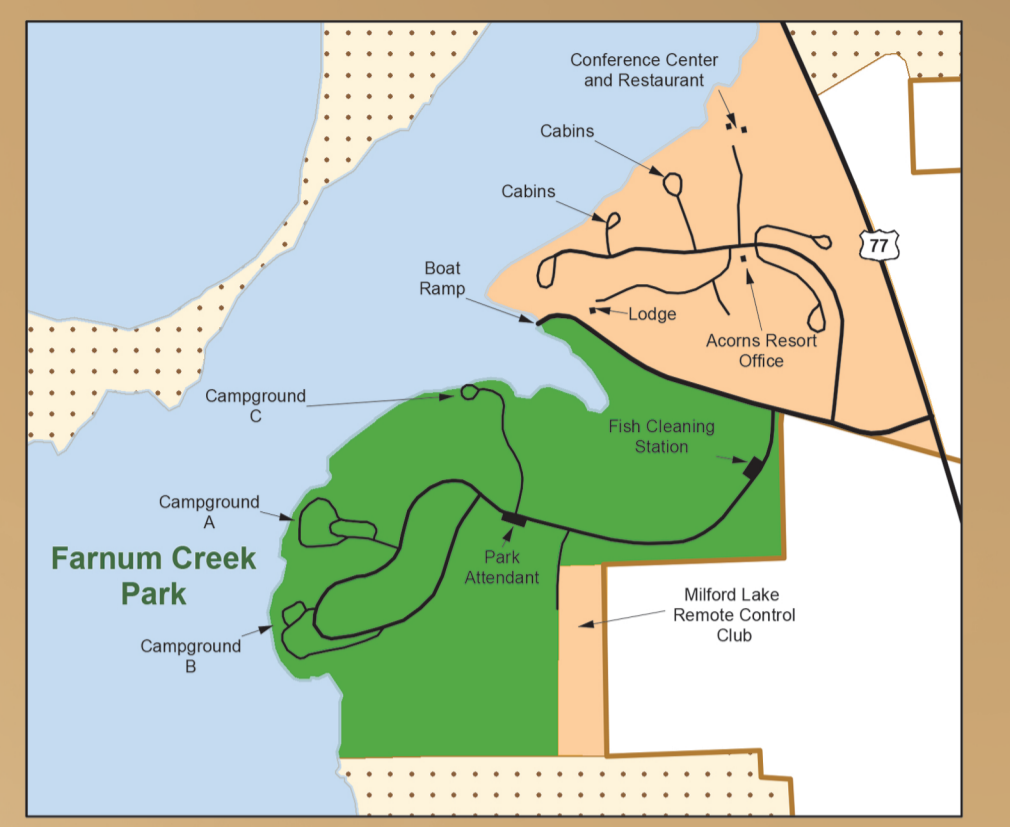
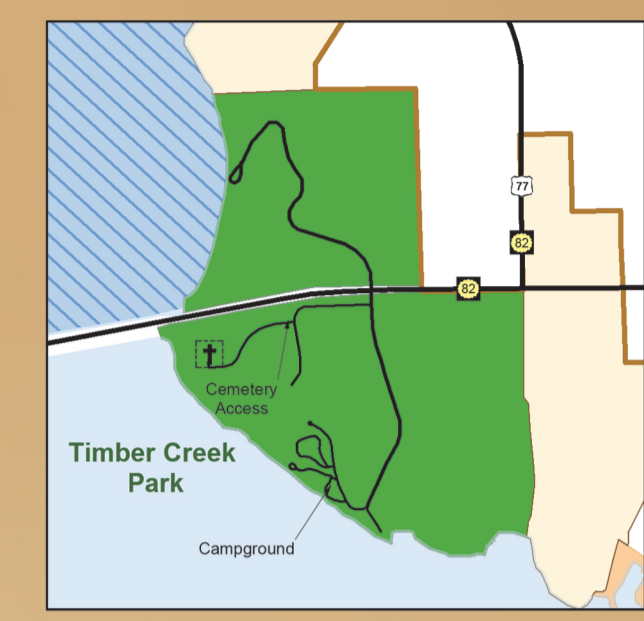
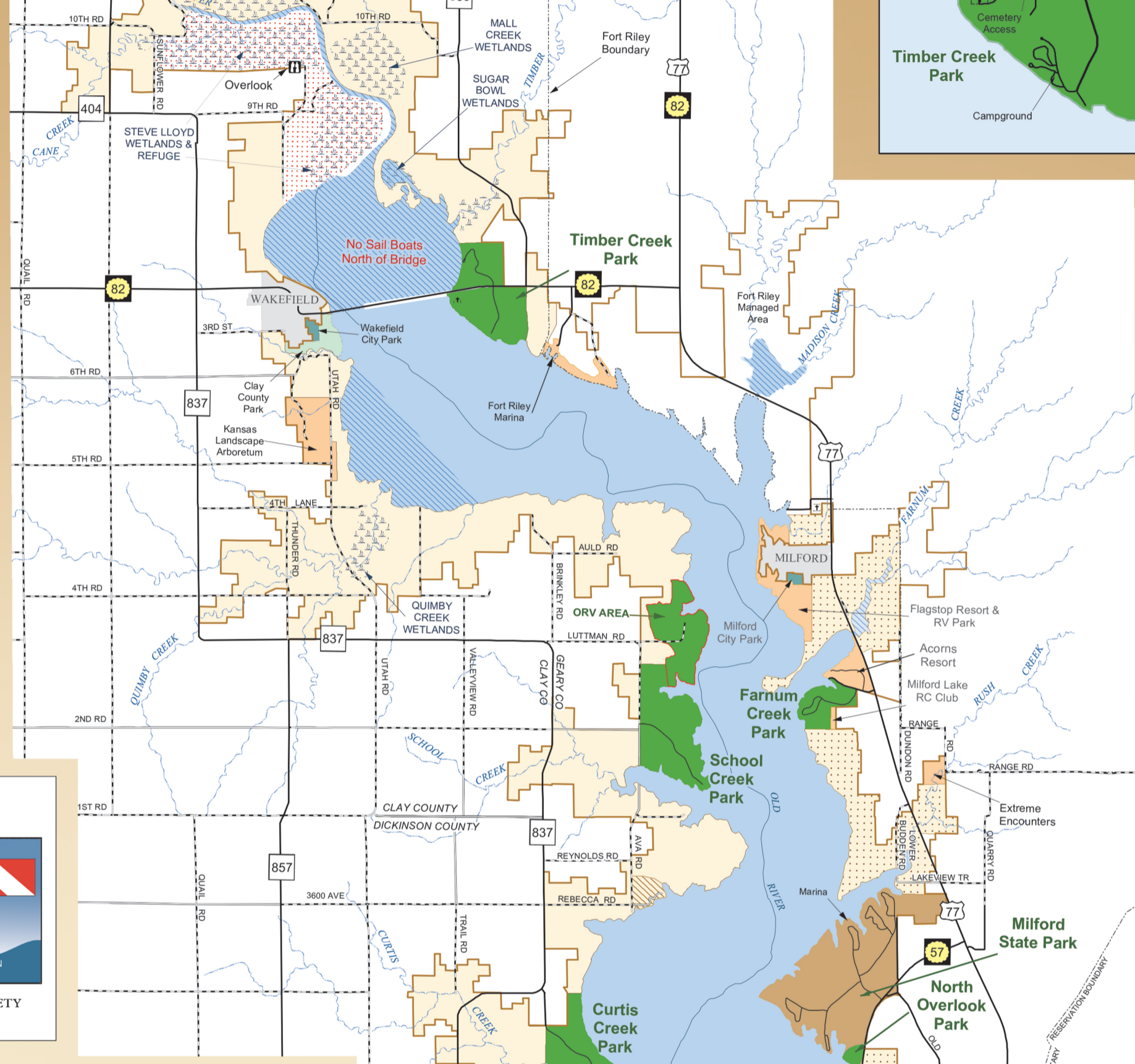
Surface area, acres:
Top multipurpose pool 15,709
Top flood control pool 33,000

Shoreline, mi. (multipurpose pool) 163



DANGER

Due to fluctuations in lake elevations, partially submerged and submerged hazards may be encountered. Boat operators should exercise extreme caution at all times while underway on the lake.



Mileage

Project Office - Farnum Creek --- 6 miles
Farnum Creek - Timber Creek --- 8 miles
Timber Creek - School Creek --- 12 miles
School Creek - Curtis Creek --- 4 miles
Curtis Creek - Rolling Hills --- 6 miles
Rolling Hills - Project Office --- 4 miles

Trails

	Loop Mileage	Linear Mileage	Walking	Biking	Equestrian	Off Road Vehicle	Handicap Accessible
Milford State Park							
Waterfall Trail	0.6		X	X			
Crystal Trail	2.2		X	X	X		
Eagle Ridge Trail	8.5		X	X	X		
Wildlife Viewing Tower	0.2	X	X				
Pipeline Trail	1.0	X	X	X			
Milford Nature Center							
Tallgrass Trail	1.5	X					
Outlet Park							
Riverwalk Trail	4.8	X	X	X		**X	
Old River Bluff Trail	1.25	X	X	X			
Kansas Landscape Arboretum							
Meadow Willow Trail	0.5	X					
Wild Acres Trail	0.25	X					
Woodland Trail	1.0	X					
Acorns Resort							
Liminal Trail	3.1	X	X				
School Creek ORV Area							
	287 Acres						*X

* ORVs must be 50 inches or less in width
** Packed limestone gravel

